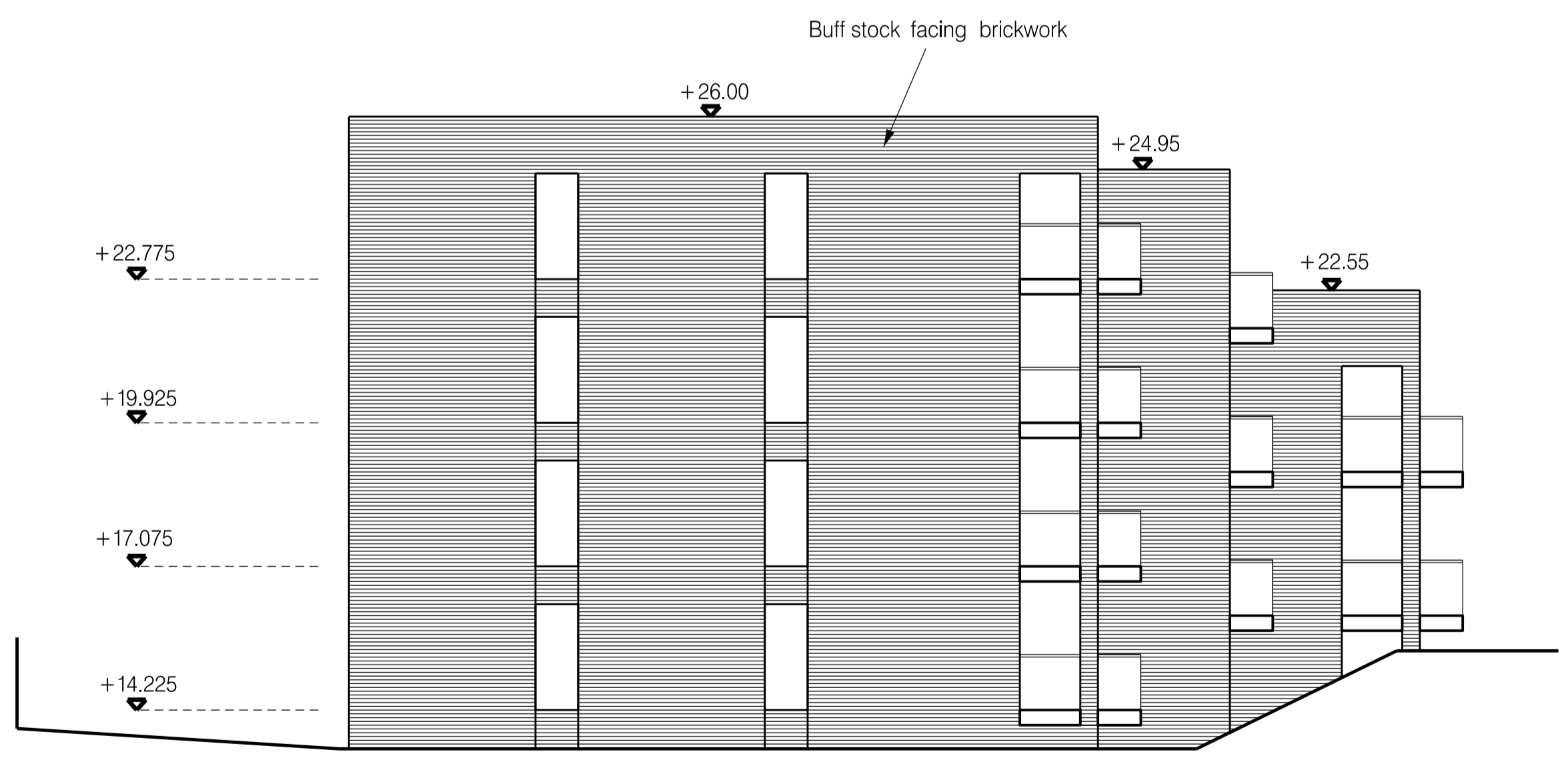


PROPOSED SOUTH WEST ELEVATION
(SANDERSTEAD ROAD)



PROPOSED NORTH EAST ELEVATION

Notes

- 1. DO NOT SCALE THIS DRAWING
- 2. CONTRACTOR TO CHECK ALL DIMENSIONS ON SITE.
- 3. THIS DRAWING MUST NOT BE REPRODUCED WITHOUT PERMISSION.

Revisions

A	Proposed scheme updated	08.03.17
B	External steps adjusted	09.03.17
C	Annotation updated	23.03.17
D	Building footprint reduced in size, Stepping in elevations updated, parking omitted, bin store relocated,	24.05.17
E	Windows and balconies added	03.11.17
F	Windows and balconies updated	24.11.17

Drawing
PROPOSED ELEVATIONS
(2 OF 2)

2, WEST HILL,
SANDERSTEAD,
SOUTH CROYDON,
SURREY.

Scale 1:100

Date NOVEMBER 2016

Drawn

TOMEI AND MACKLEY PARTNERSHIP
 BY MILL HOUSE, BY MILL LANE, GODSTONE, SURREY
 01883 740011 01883 744119
 E-Mail: office@tomeiandmackley.co.uk

Drawing Number	Revision
2841-31	A
	B
	C
	D
	E
	F