

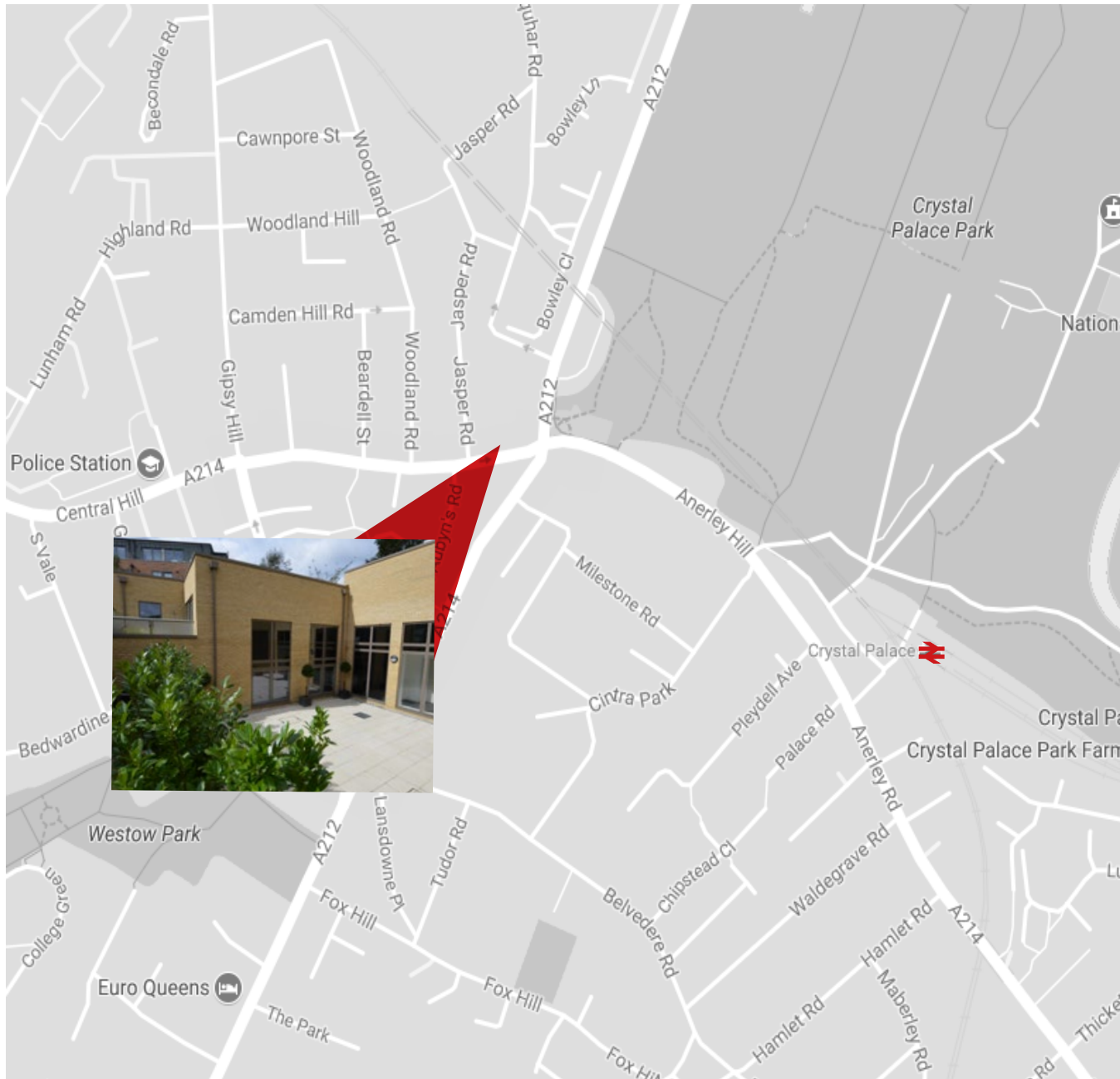


Zola House, Westow Hill SE19 1TX

Ground floor commercial unit with B1 use to let

[View more information...](#)





- Ground floor commercial unit with B1 use
- Prominent location positioned close to the Crystal Palace 'Triangle'
- C. 662sqft (61.5sqm)
- Quoting rent of £20,000pa or a guide of £300,000 LH

DESCRIPTION

A 662sqft ground floor commercial unit which forms part of a mixed-use apartment scheme on the borders of the Crystal Palace Triangle. The unit is offered in shell and core condition, although the developer has fitted the front door and double glazed windows. We understand the property has B1 use, however, the unit would be ideal for a number of uses.

LOCATION

Positioned in a brand new development on the edge of the Crystal Palace Triangle; known for its array of bars, restaurants, shops and views. Crystal Palace Station is just 0.3 miles away offering links into London Victoria (approx 31 minutes) and London Bridge (approx 25 minutes) whilst several bus routes pass nearby.

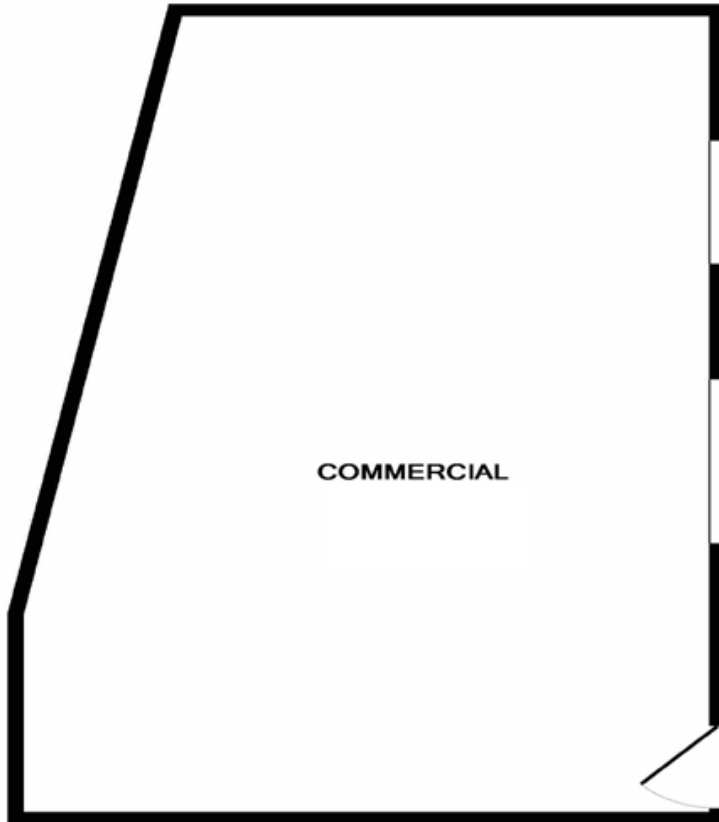


E: commercial@acorn.ltd.uk

W: acorncommercial.co.uk

**1 Sherman Road,
Bromley, Kent BR1 3JH**
T: 020 8315 5454

120 Bermondsey Street,
London SE1 3TX
T: 020 7089 6555



TERMS

£20,000pa for a new lease, or a guide of £300,000 LH

BUSINESS RATES

To be confirmed.

SERVICES

We understand the property is connected to all mains services, however, interested parties are advised to make their own enquires in this regard.

VAT

We understand that VAT is not applicable in this transaction.

VIEWINGS

All viewings are strictly by prior appointment with Acorn's Commercial & Development Division on 020 8315 5454.



For more information contact:
Tony Wood on
020 8315 5454

[Meet the rest of the team...](#)

This [brochure and its content] is copyright of Acorn Limited © 2016. All rights reserved. Any redistribution or reproduction of part or all of the contents in any form is prohibited. You may not, except with our express written permission, distribute or commercially exploit the content, nor may you transmit it or store it in any form.

Acorn as our vendor's agents have endeavoured to check the accuracy of these sales particulars, but however can offer no guarantee, we therefore must advise that any prospective purchaser employ their own experts to verify the statements contained herein. All measurements are approximate and should not be relied upon. No equipment, utilities, circuits or fittings have been tested.



1 Sherman Road,
Bromley, Kent BR1 3JH
T: 020 8315 5454

E: commercial@acorn.ltd.uk
W: acorncommercial.co.uk

120 Bermondsey Street,
London SE1 3TX
T: 020 7089 6555